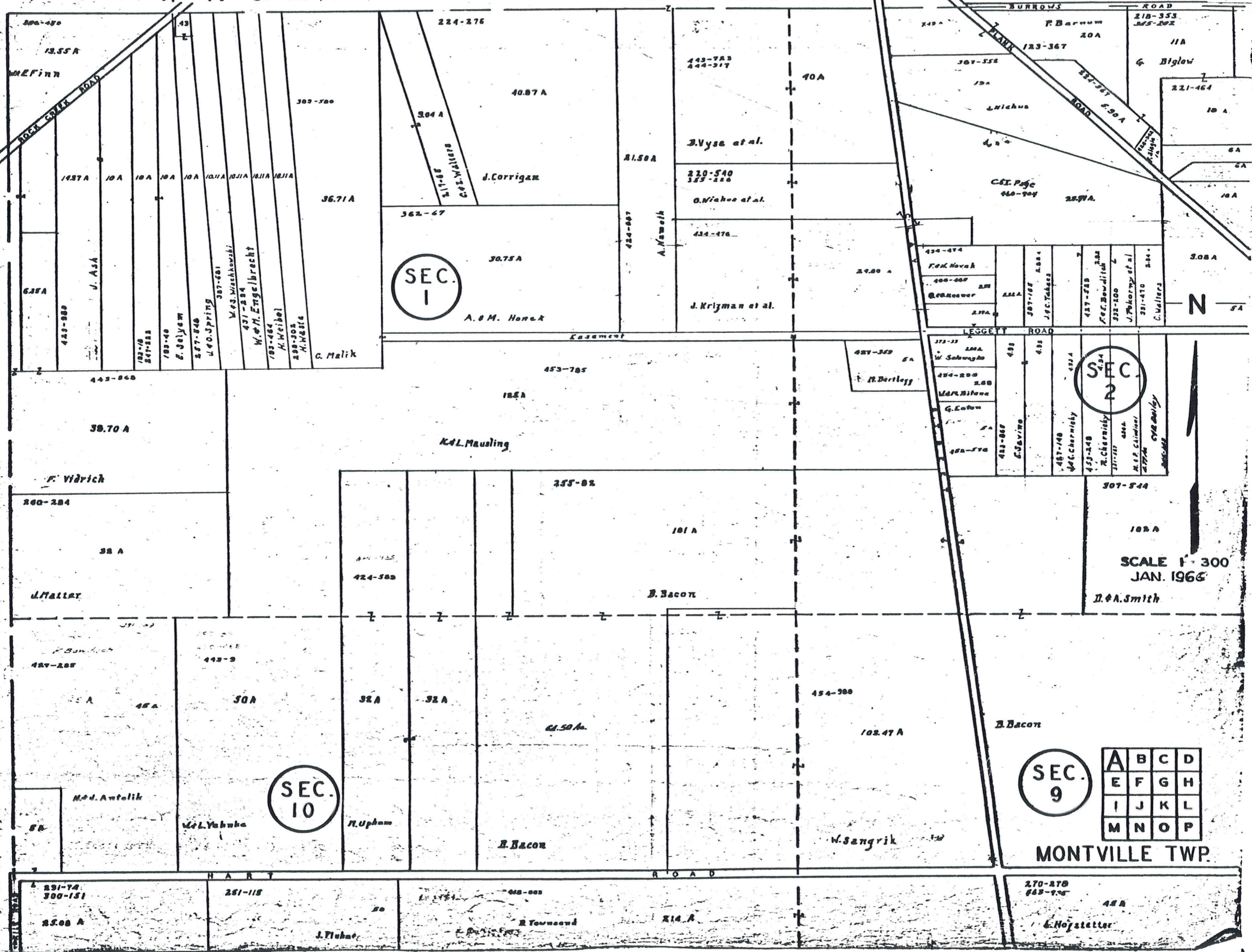


THOMPSON TOWNSHIP

HAMBDEN TOWNSHIP



SEC. 1

SEC. 2

SEC. 10

SEC. 9

A	B	C	D
E	F	G	H
I	J	K	L
M	N	O	P

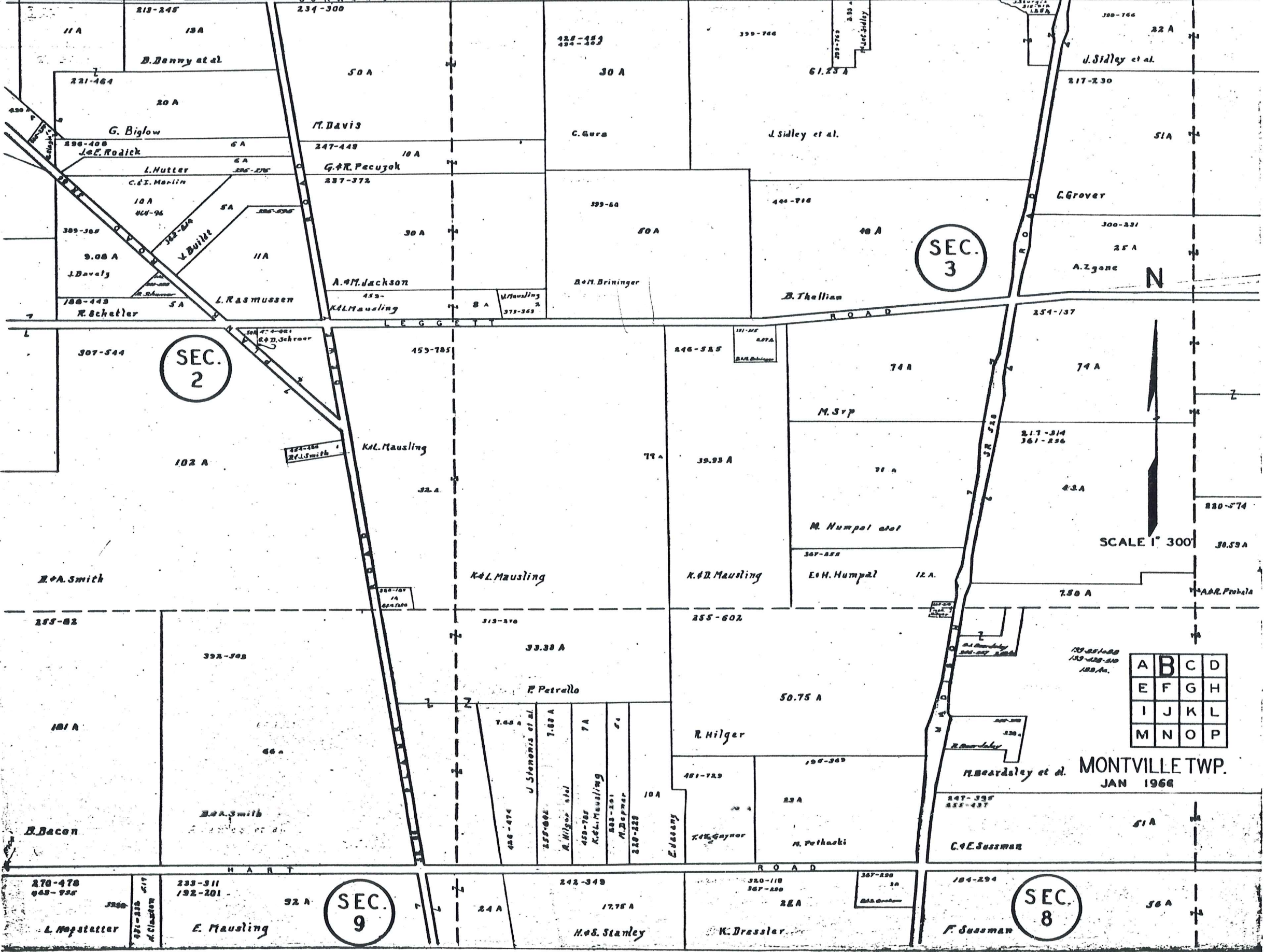
MONTVILLE TWP.

SCALE 1" = 300'
JAN. 1966

N



T H O M P S O N T O W N S H I P



SEC. 2

SEC. 3

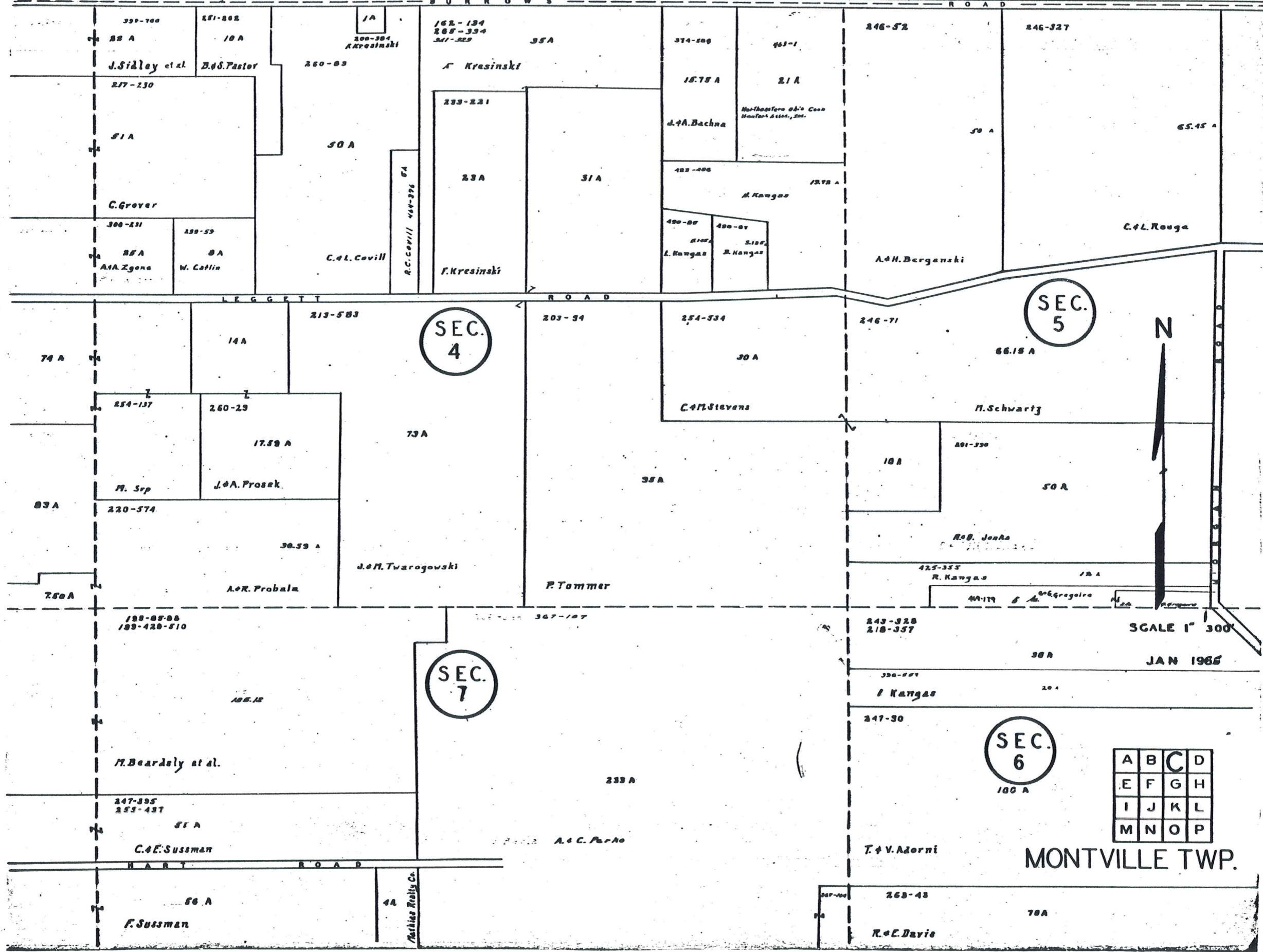
SEC. 9

SEC. 8

A	B	C	D
E	F	G	H
I	J	K	L
M	N	O	P

MONTVILLE TWP.
JAN 1968

T H O M P S O N T O W N S H I P



SEC. 4

SEC. 5

SEC. 7

SEC. 6

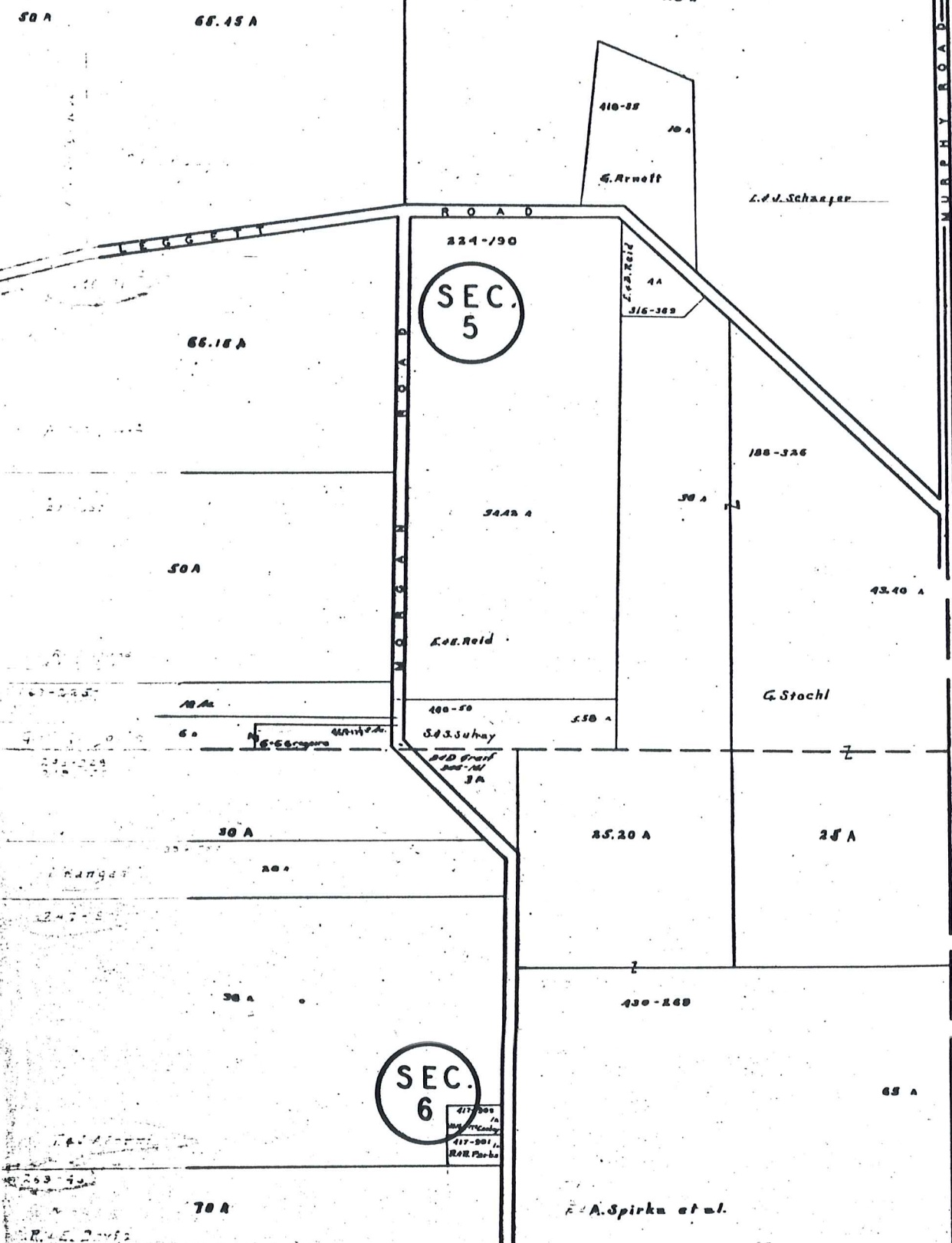
A	B	C	D
E	F	G	H
I	J	K	L
M	N	O	P

SCALE 1" = 300'
JAN 1965

MONTVILLE TWP.

T H O M P S O N T O W N S H I P

B U R R O W S R O A D



SEC. 5

SEC. 6

A S H T A B U L A C O U N T Y

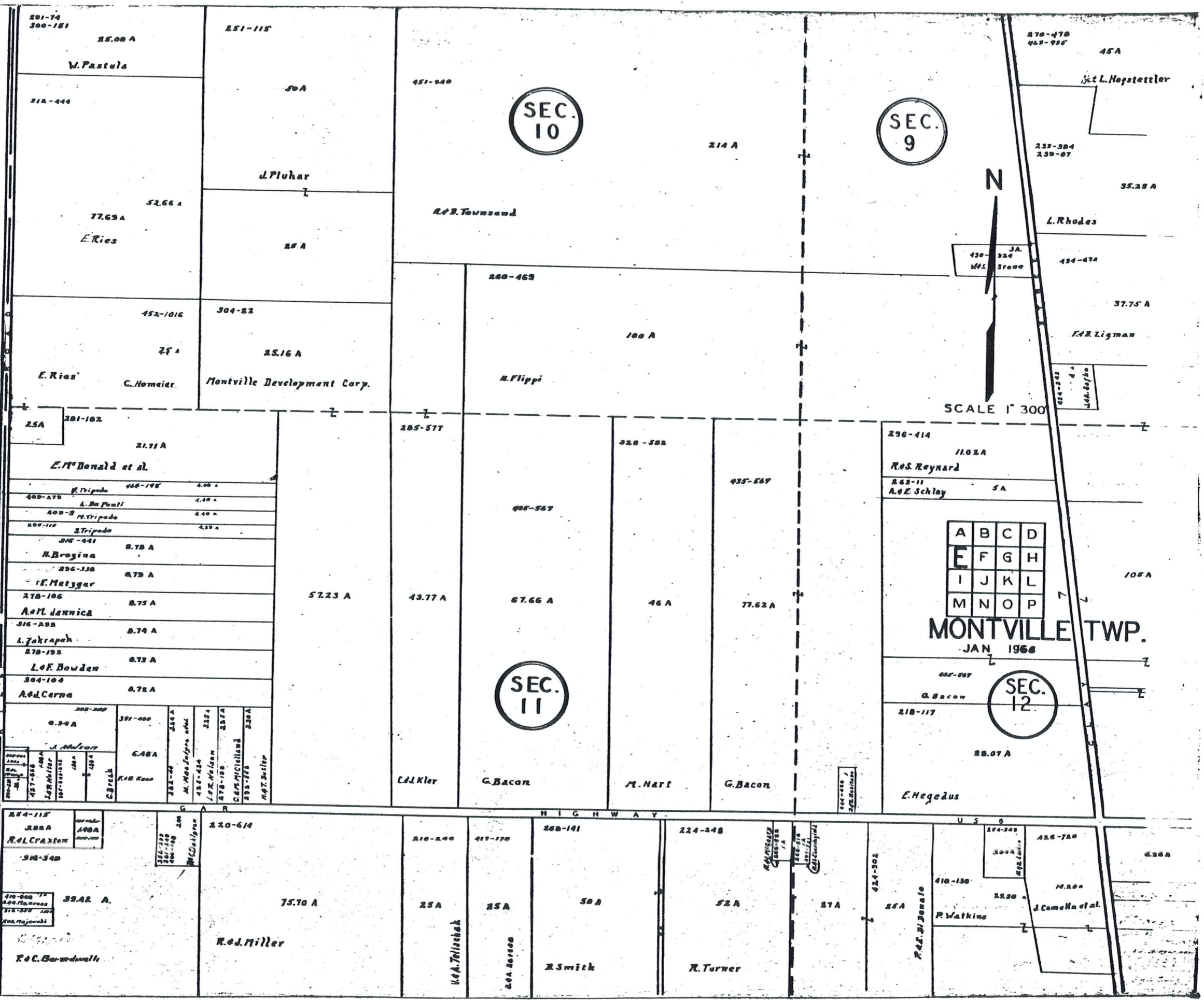


SCALE 1" = 300'
JAN 1968

A	B	C	D
E	F	G	H
I	J	K	L
M	N	O	P

MONTVILLE TWP.

H A M B D E N T O W N S H I P



SEC. 10

SEC. 9

SEC. 11

SEC. 12

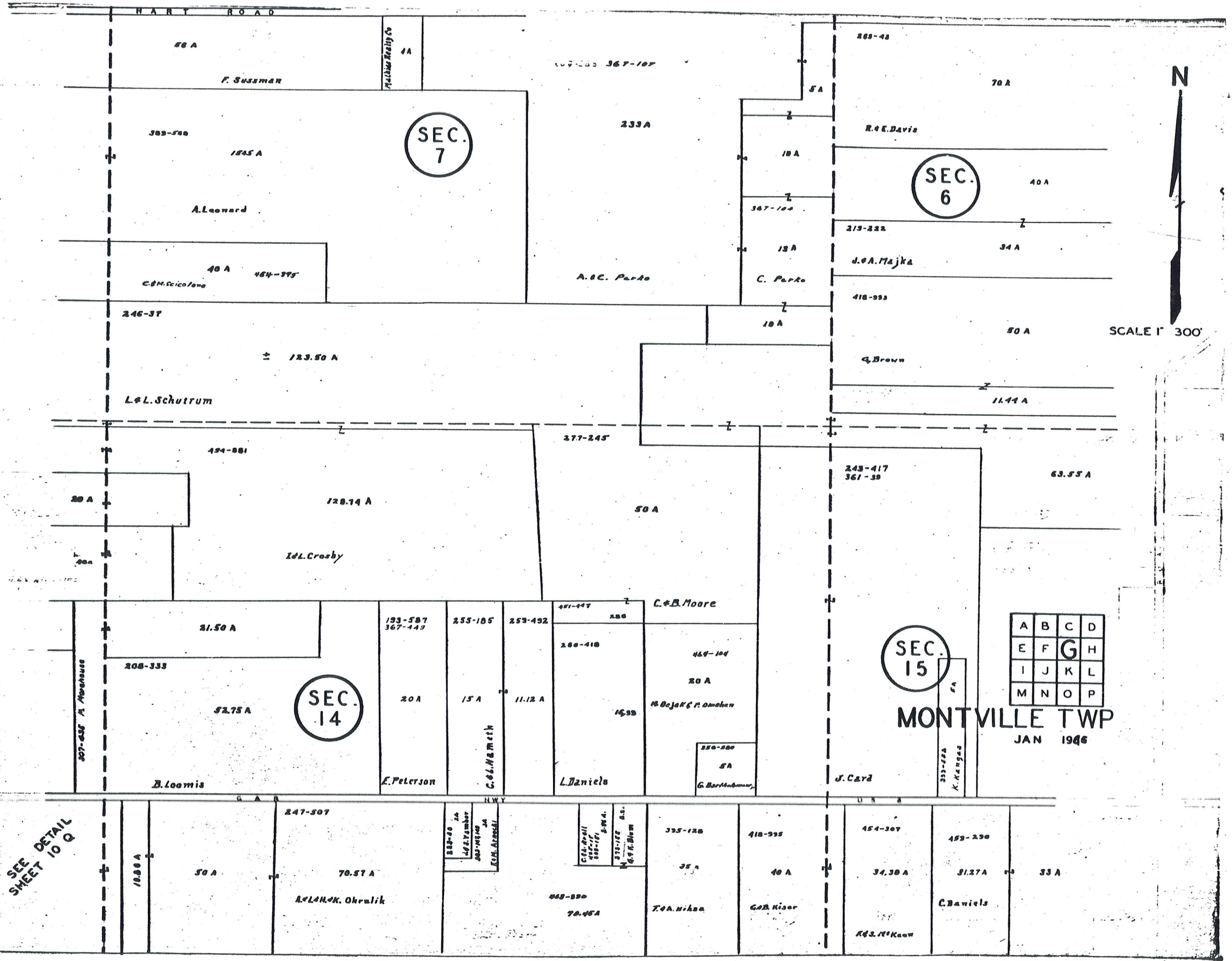
A	B	C	D
E	F	G	H
I	J	K	L
M	N	O	P

MONTVILLE TWP.
JAN 1968

SCALE 1" = 300'

N

U S HIGHWAY



SEC. 7

SEC. 6

SEC. 14

SEC. 15

A	B	C	D
E	F	G	H
I	J	K	L
M	N	O	P

MONTVILLE TWP
JAN 1966



SCALE 1" = 300'

SEE DETAIL SHEET 10 Q

10.80 A

50 A

70.57 A

L. & M. K. Okruslik

70.46 A

70 A. Niska

40 A

34.30 A

31.27 A

33 A

R. S. Keen

C. Daniels

G. B. Nisor

35 A

335-120

418-995

454-307

483-230

247-507

335-120

418-995

454-307

483-230

21.50 A

193-587
367-443

255-185

253-492

491-447

280

260-410

464-104

20 A

1639

350-500

5 A

243-417
367-39

63.55 A

208-333

52.75 A

20 A

15 A

11.12 A

200-410

464-104

20 A

1639

350-500

5 A

243-417
367-39

63.55 A

B. Loomis

E. Peterson

C. L. Nemeth

L. Daniels

G. Bar-Madame

J. Card

K. Kangas

C. & B. Moore

M. DeJok & P. Omohan

F. Susmar

A. Leonard

L. & L. Schutrum

L. & L. Crosby

C. & B. Moore

M. DeJok & P. Omohan

J. Card

K. Kangas

G. Brown

J. A. Majka

R. E. Davis

A. & C. Parke

C. Parke

C. M. Scicolone

246-37

123.50 A

454-881

128.14 A

277-245

50 A

243-417
367-39

63.55 A

68 A

1A

367-104

203-48

70 A

233A

5 A

10 A

367-104

13 A

10 A

40 A

34 A

50 A

11.44 A

40 A 484-395

20 A

20 A

307-636 N. Moresaus

10.80 A

247-507

142 Yamber

203-410

E. M. Alessi

335-120

418-995

454-307

483-230

33 A

335-120

418-995

454-307

483-230

33 A

418-995

454-307

483-230

33 A

33 A

454-307

483-230

33 A

33 A

33 A

483-230

33 A

33 A

33 A

33 A

483-230

33 A

33 A

33 A

33 A

483-230

33 A

33 A

33 A

33 A

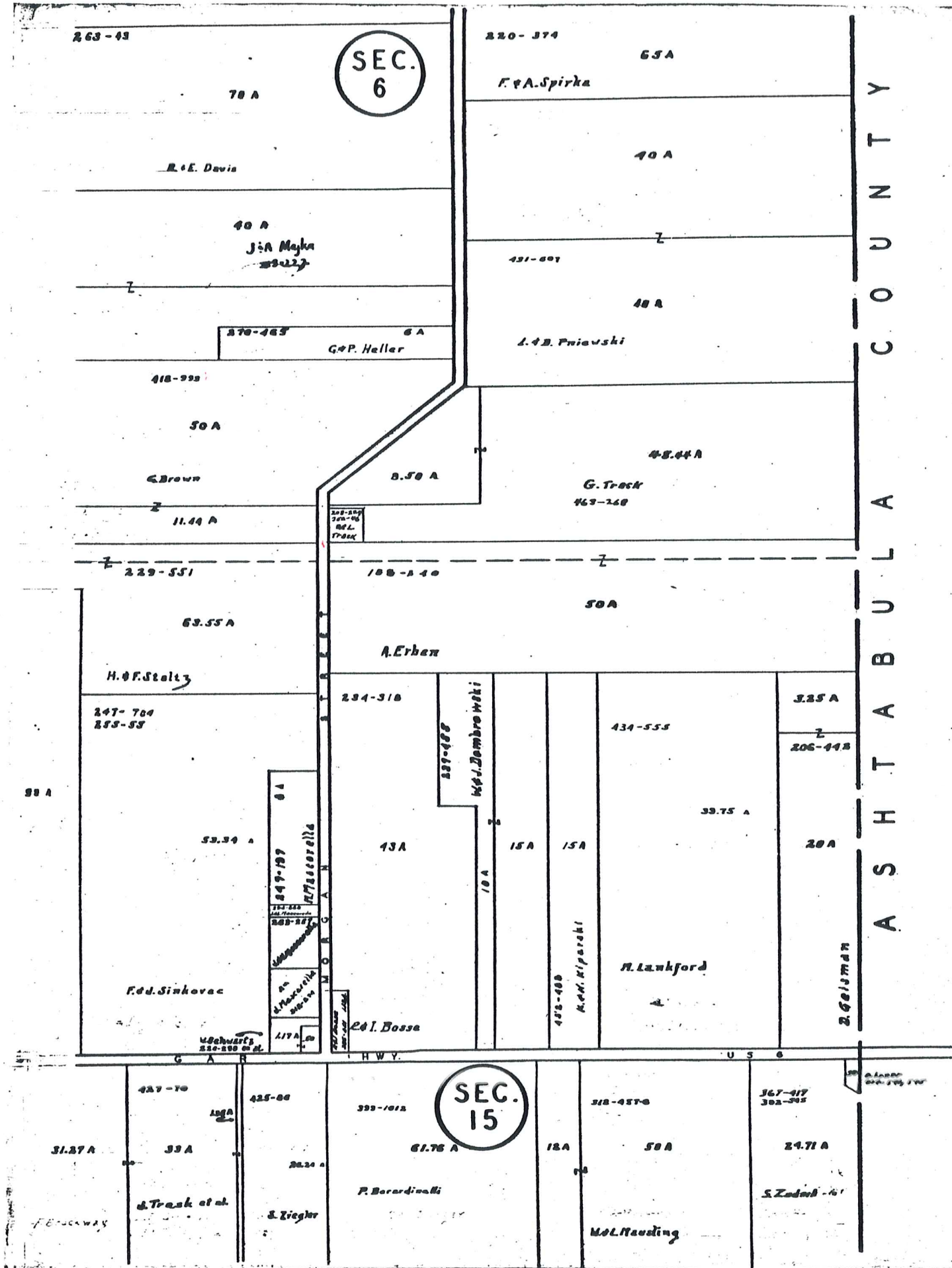
483-230

33 A

33 A

33 A

33 A

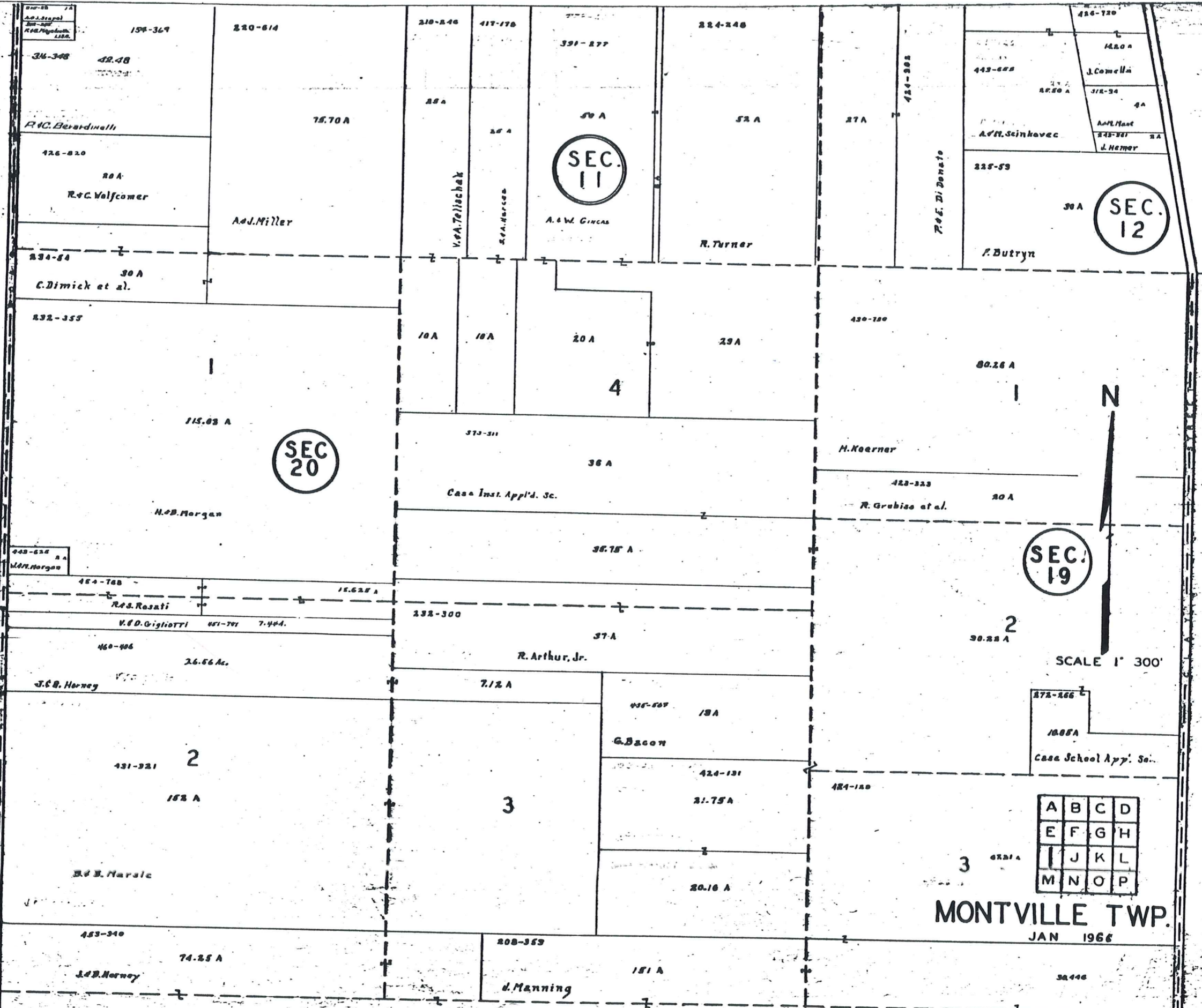


SCALE 1" = 300'
 JAN 1966

A	B	C	D
E	F	G	H
I	J	K	L
M	N	O	P

MONTVILLE TWP.

H A M B E N T O W N S H I P



Map-25
As-1-1961
200-100
1000-1000
1000-1000

34-348
42.48

R.C. Bernardelli

126-820

20 A

R.C. Walfomer

134-84

30 A

C. Dimick et al.

132-355

115.03 A

443-624
2 A

M.H. Morgan

454-788

R.S. Rosati

V.D. Origiotti
451-791
7.44 A

460-406

26.66 Ac.

J.C.B. Horney

431-321

163 A

B.B. Narsic

453-340

74.25 A

J.C.B. Horney

220-614

75.70 A

A.J. Miller

210-846
417-178

28 A

25 A

V.A. Telischak

24 A

A.W. Girgas

SEC. 11

A.W. Girgas

214-248

52 A

R. Turner

27 A

420-302

R.D. Di Donato

416-120

14.80 A

J. Comella

378-34

4 A

A.M. Sant

343-341

J. Nemer

215-59

30 A

F. Butryn

SEC. 12

430-300

80.26 A

H. Koerner

423-323

R. Grubise et al.

35.78 A

132-300

37 A

R. Arthur, Jr.

7.12 A

435-507

19 A

G. Bacon

424-131

21.75 A

424-120

20.16 A

SEC. 19

30.28 A

2

30.28 A

3

172-166

1085 A

Case School App. Se.

A	B	C	D
E	F	G	H
I	J	K	L
M	N	O	P

MONTVILLE TWP.

JAN 1966

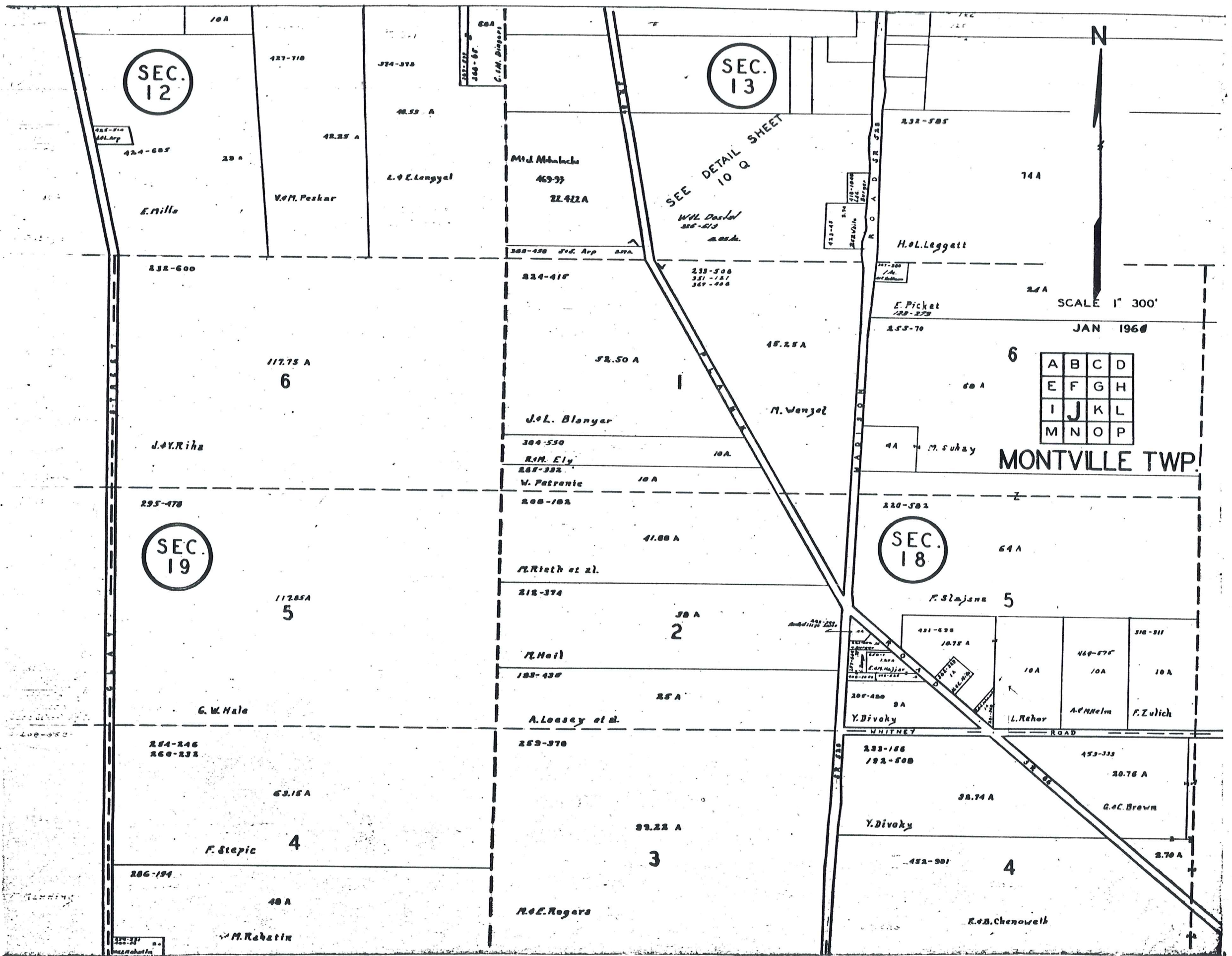
30.44

208-363

151 A

J. Manning

1/2
1/2
1/2



SEC. 12

SEC. 13

SEC. 18

SEC. 19

SEE DETAIL SHEET
10 Q

SCALE 1" 300'

JAN 1960

MONTVILLE TWP.

A	B	C	D
E	F	G	H
I	J	K	L
M	N	O	P



424-685

SEC. 12

E. Nilla

427-710

V.M. Peskar

374-370

48.53 A

L. & E. Longyel

340-87
C.M. Dingert

M.J. Mihalich

469-97

22.422A

SEC. 13

W.L. Dostal
226-513
a.s.h.

232-585

H.O.L. Leggett

144

232-600

117.75 A

6

J.V. Riha

224-410

52.50 A

J.L. Blanger

304-530

R.M. Ely

265-332

W. Patronic

10 A

206-182

41.88 A

R. Rieth et al.

212-374

38 A

2

R. Neil

183-430

25 A

A. Looney et al.

SEC. 18

SEC. 18

64 A

F. Slajana

5

295-470

117.85A

5

G.W. Hale

254-246

260-231

63.15A

F. Stepic

4

286-194

40 A

M. Rabatin

259-370

89.22 A

3

R.E. Rogers

220-582

SEC. 18

64 A

F. Slajana

5

10.75 A

10 A

L. Rehor

453-333

20.76 A

G.C. Brown

431-630

10 A

10 A

A. Helm

310-311

10 A

F. Zulich

200-480

9 A

Y. Divoky

233-186

192-508

38.74 A

Y. Divoky

452-301

4

R.E. Chenoweth

200-480

9 A

Y. Divoky

233-186

192-508

38.74 A

Y. Divoky

452-301

4

R.E. Chenoweth

200-480

9 A

Y. Divoky

233-186

192-508

38.74 A

Y. Divoky

452-301

4

R.E. Chenoweth

200-480

9 A

Y. Divoky

233-186

192-508

38.74 A

Y. Divoky

452-301

4

R.E. Chenoweth

200-480

9 A

Y. Divoky

233-186

192-508

38.74 A

Y. Divoky

452-301

4

R.E. Chenoweth

200-480

9 A

Y. Divoky

233-186

192-508

38.74 A

Y. Divoky

452-301

4

R.E. Chenoweth

200-480

9 A

Y. Divoky

233-186

192-508

38.74 A

Y. Divoky

452-301

4

R.E. Chenoweth

200-480

9 A

Y. Divoky

233-186

192-508

38.74 A

Y. Divoky

452-301

4

R.E. Chenoweth

200-480

9 A

Y. Divoky

233-186

192-508

38.74 A

Y. Divoky

452-301

4

R.E. Chenoweth

200-480

9 A

Y. Divoky

233-186

192-508

38.74 A

Y. Divoky

452-301

4

R.E. Chenoweth

200-480

9 A

Y. Divoky

233-186

192-508

38.74 A

Y. Divoky

452-301

4

R.E. Chenoweth

200-480

9 A

Y. Divoky

233-186

192-508

38.74 A

Y. Divoky

452-301

4

R.E. Chenoweth

200-480

9 A

Y. Divoky

233-186

192-508

38.74 A

Y. Divoky

452-301

4

R.E. Chenoweth

200-480

9 A

Y. Divoky

233-186

192-508

38.74 A

Y. Divoky

452-301

4

R.E. Chenoweth

200-480

9 A

Y. Divoky

233-186

192-508

38.74 A

Y. Divoky

452-301

4

R.E. Chenoweth

200-480

9 A

Y. Divoky

233-186

192-508

38.74 A

Y. Divoky

452-301

4

R.E. Chenoweth

200-480

9 A

Y. Divoky

233-186

192-508

38.74 A

Y. Divoky

452-301

4

R.E. Chenoweth

200-480

9 A

Y. Divoky

233-186

192-508

38.74 A

Y. Divoky

452-301

4

R.E. Chenoweth

200-480

9 A

Y. Divoky

233-186

192-508

38.74 A

Y. Divoky

452-301

4

R.E. Chenoweth

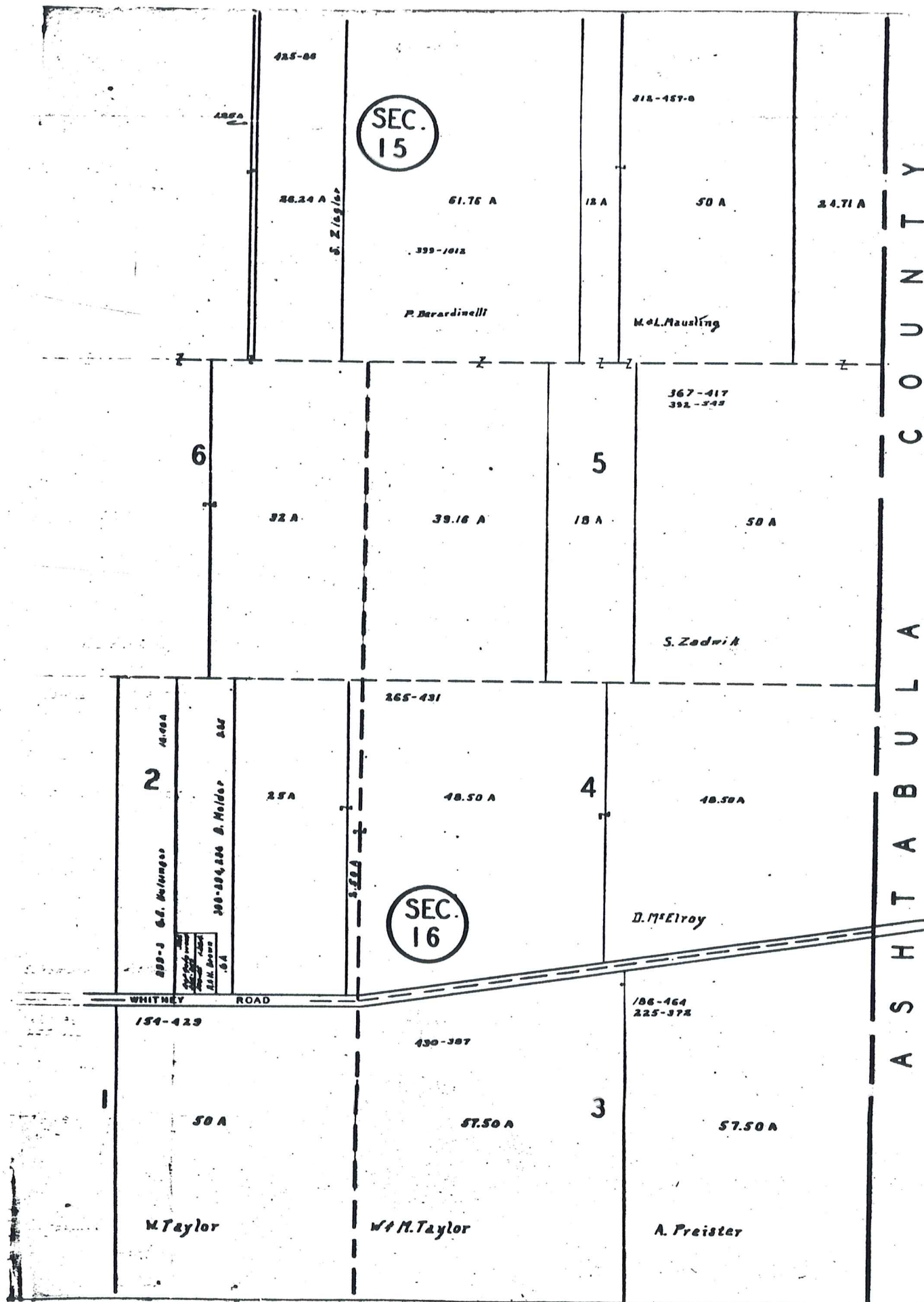
200-480

9 A

Y. Divoky

233-186

192-508

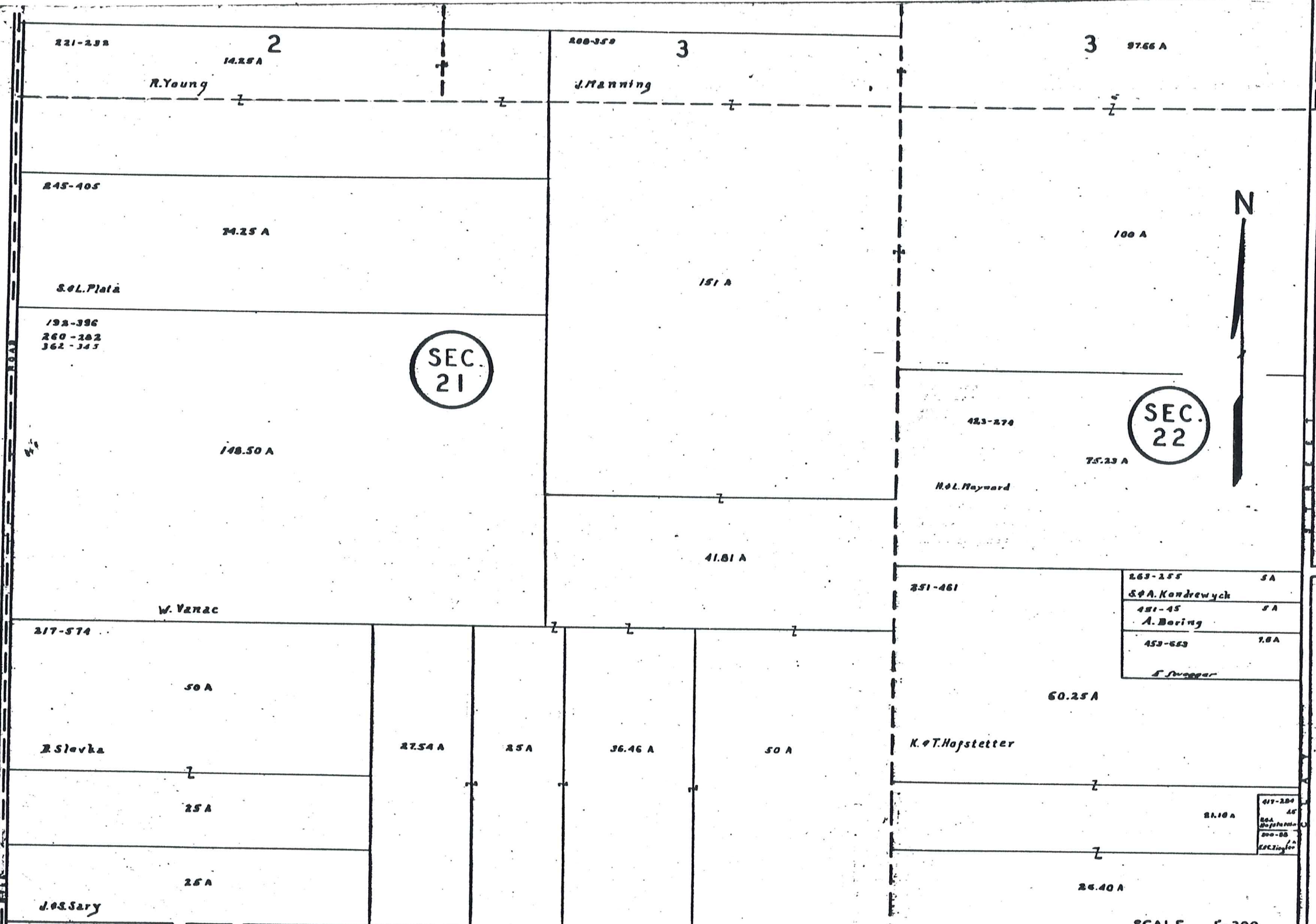


N
 SCALE 1"=300'
 JAN 1966

A	B	C	D
E	F	G	H
I	J	K	L
M	N	O	P

MONTVILLE TWP.

H A M B D E N T O W N S H I P



SEC. 21

SEC. 22

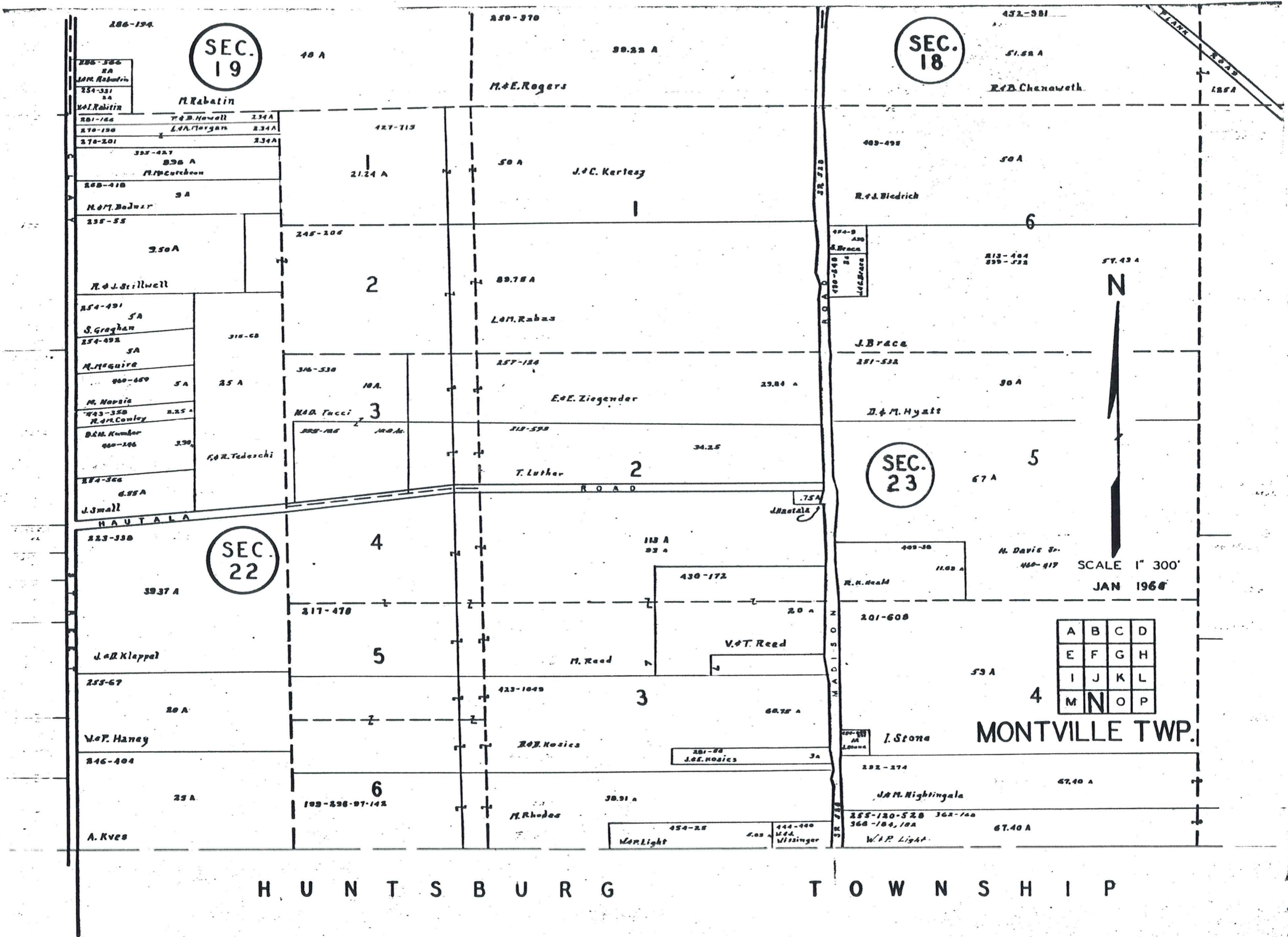


SCALE 1"=300

H U N T S B U R G T O W N S H I P

A	B	C	D
E	F	G	H
I	J	K	L
M	N	O	P

MONTVILLE TWP.
JAN 1960



SEC. 19

SEC. 18

SEC. 23

SEC. 22

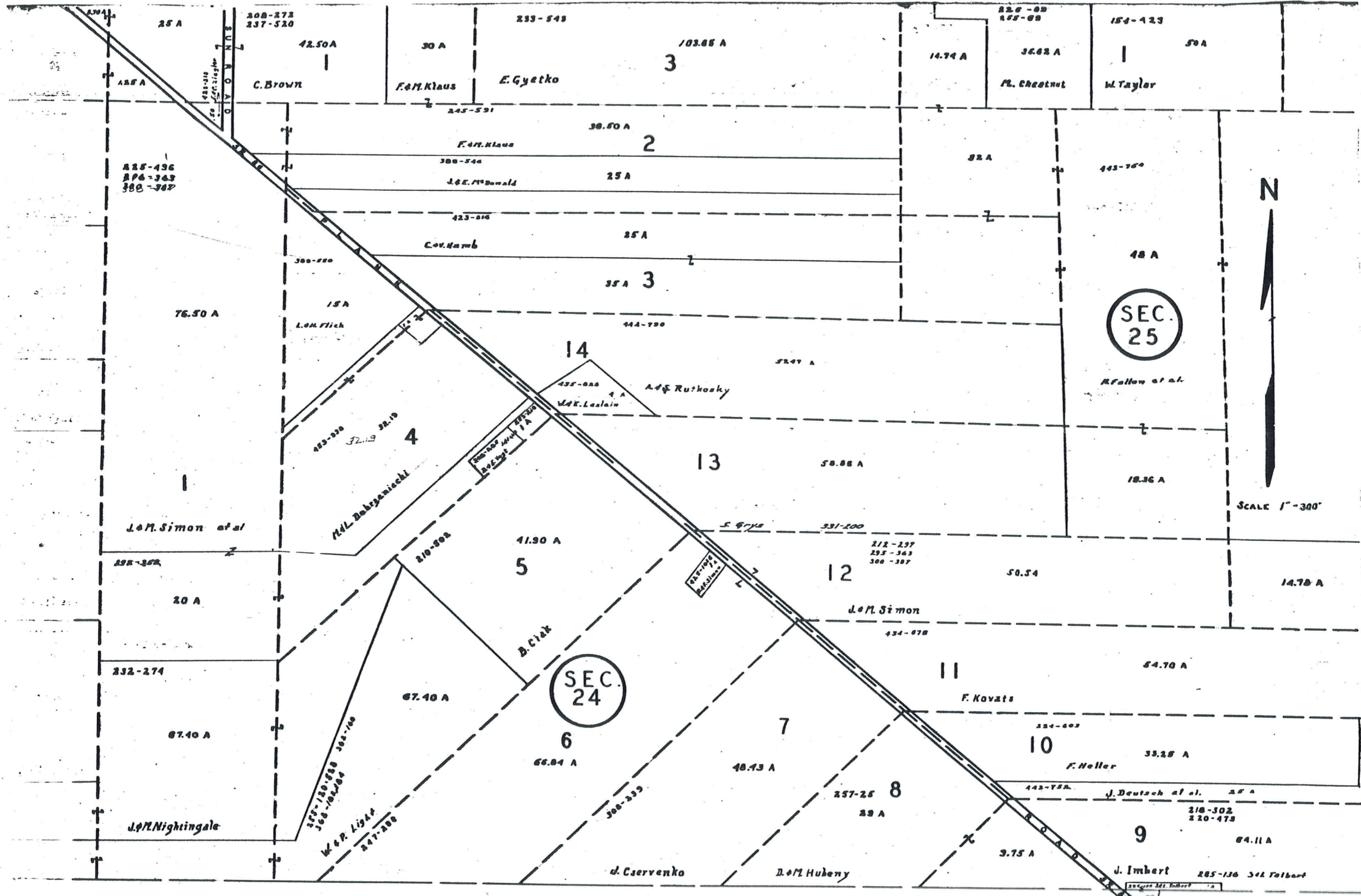


SCALE 1" = 300'
JAN 1966

A	B	C	D
E	F	G	H
I	J	K	L
M	N	O	P

MONTVILLE TWP.

H U N T S B U R G T O W N S H I P



H U N T S B U R G T O W N S H I P

SCALE 1" = 300'
JAN 1966

A	B	C	D
E	F	G	H
I	J	K	L
M	N	O	P

MONTVILLE TWP.

MONTVILLE SECTION 13 TWP



SCALE 1" = 200'

JAN 6 1966

